



2023-2024

UNIFORM

GUIDELINES

Purchase uniforms online at www.CCANV.com
under the "Parent Info" tab or on campus at:

The CORNERSTORE

General Uniform Guidelines

Cornerstone requires all students to wear a school uniform. Our uniforms identify students as members of the school community and fosters a spirit of cooperation, participation, and safety.

For your convenience, all required logo uniform pieces are available for purchase at The CornerSTORE or on our website at <https://the-corner-store-104149.square.site/>.

Uniform pieces that do not require the school logo can be purchased at the store of your choice but must follow the uniform guidelines specified.

All Plaid items should be purchased at The CornerSTORE or www.schoolbelles.com, CODE: s3035;

The school uniform policy will be strictly enforced. It is the responsibility of the parent to see that their children follow our uniform dress code. Details concerning uniform policy infractions can be found in the Parent Student Handbook.

Administration reserves the right to adjust the uniform guidelines and dress code policy as needed. Cornerstone Christian Academy & Tykes Preschool uniform guidelines and dress code is reviewed annually and any changes are implemented via the Parent Student Handbooks, school website or school newsletters.

School Wide Guidelines

- Modifications to the school uniform in any way is unacceptable, i.e. monogramming.
- School uniforms are required to be in good condition, clean, without holes or tears & must fit appropriately.
- Outerwear jackets worn inside of the school over uniforms must have the Cornerstone logo.
- Heavy winter jackets for outside must be school colors: black, white, gray, or red.
- Outwear jackets may NOT be worn over the chapel uniform during chapel.

Academy K-8 Guidelines

Tops

- Polo shirts are required to have the school logo and are available for purchase on campus at The CornerSTORE or on our website at <https://the-corner-store-104149.square.site/>
- White button-up Oxford Shirts and Girl's Peter Pan collared shirts that are worn on Tuesdays for Winter Chapel do not require the school logo and can be purchased anywhere if they meet uniform guidelines.

Dresses / Skirts / Skorts / Jumpers

- Polo Dresses must have the school logo.
- Solid black dance or bike shorts must be worn under jumpers/dresses/skirts.
- Girls Skirts/Skorts/Jumpers/Dresses/Shorts should measure no more than 4 inches above the knee.
- Plaid skirts, jumpers, and skorts may be purchased at www.schoolbelles.com, CODE: s3035 or at The CornerSTORE

Academy K-8 Guidelines (continued)

Bottoms

- Belts are required when belt loops are exposed (black or plaid).
- Pants must be uniform style/cut. Chinos, and Dockers style pants are required.
- Pants and shorts must fit well. There are to be no extremes in the fit of pants such as being excessively low cut, tight, baggy, or flared.
- Denim, cargo pants/shorts, athletic joggers, sweatpants, leggings (unless worn under uniform, as noted above) are NOT acceptable, regardless of color.

Shoes

- Shoes and shoelaces must be APPROVED SCHOOL COLORS ONLY. Solid red, white, black, /silver or a combination of these colors are acceptable.
- Tennis shoes, ankle or mid-calf boots, and dress shoes with a flat heel are acceptable if they meet the color criteria above. Rubber soles are recommended for safety purposes.
- Shoes with characters or lights are NOT allowed.
- Shoes with a heel; shoes with holes, i.e. Crocs or Yeezy Running Shoes, foam shoes of any kind; cowboy boots, and knee-high boots are NOT allowed.

Tuesday Winter Chapel Shoes

- Winter Chapel Shoes MUST be SOLID BLACK including the soles.
- Solid black Tennis Shoes (including soles) with NO other visible colors are acceptable.
- Solid black dress shoes with a flat heel are acceptable.

Socks / Leggings / Tights

- Ankle or knee socks must be red, white, black, or gray.
- Leggings worn under uniform skirts, skorts or dresses must be solid black.
- Tights worn under uniform skirts, skorts or dresses must be solid black, red, white or gray.

Tuesday Chapel Socks / Leggings / Tights

- Girls must wear white or black ankle or knee socks on Tuesdays with Fall/Spring Chapel Uniform.
- Girls must wear solid black knee socks or black tights on Tuesdays with Winter Chapel Uniform.
- Boys must wear white or black socks on Tuesdays with Fall/Spring Chapel Uniform.
- Boys must wear black socks with Winter Chapel Uniform.

8th GRADE CARDIGANS - IMPORTANT!

- **MANDATORY-** The 8th grade special Cornerstone "C" patch is required to be sewn on to the right side of the school Cardigan for Winter Chapel. PARENTS MUST purchase the "C" patch at The CornerSTORE. The CornerSTORE will sew the patch on to the 8th grade students cardigan. The cardigan MUST be brought to The CornerSTORE prior to 10/01/23 to have patch sewn on before Winter Chapel begins.

Tykes Preschool Guidelines

Beginners, Jr. Preschool, Preschool, Pre-K



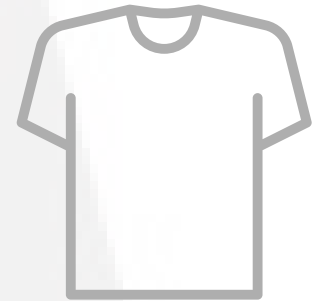
POLOS

logo required
short and long sleeve
red | black | gray
red required for Chapel Tuesdays



Shorts/Pants

LOGO NOT REQUIRED
elastic waist
black | plaid*



SPIRIT SHIRTS

logo required
short sleeve
red | black | heather gray
Beg & Jr. Preschool optional on:
Mon, Wed, Thurs, Fri
Preschool & Pre-K optional on Fridays
only



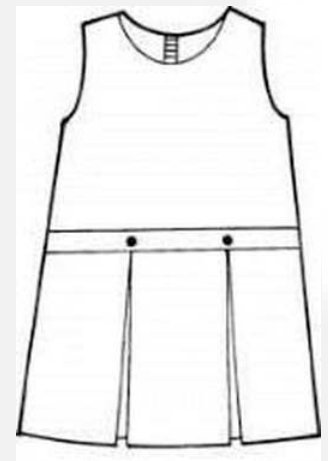
POLO DRESS

must be worn with black under-
shorts or leggings
dress must cover the shorts
red dress optional for
Chapel Tuesdays



SKORTS

LOGO NOT REQUIRED
elastic waist
black or plaid**
Girls: Chapel Option in plaid with red polo



PLAID JUMPER*

LOGO NOT REQUIRED, worn with polo
Girls: Chapel option with red polo

*All Plaid items should be purchased at The CornerSTORE or www.schoolbelles.com CODE: s3035

K-5th Grade Guidelines

Daily Uniform

Boys- Black bottom / logo polo top, any color / Black or White Socks

Girls- Black or plaid bottom / logo polo top, any color / or logo polo dress

Shoes - Must be solid or a combination of school colors - Black, Gray, Silver, Red or White

Girls Socks - Ankle socks, knee socks, tights - Red, Gray, Black or White (Must be one solid color, no designs)

Fall / Spring Chapel Tuesday's: Aug- Oct & March-May

Boys- Black Pants or Shorts / Red Polo / Solid Black or White Socks / Shoes same as Daily Uniform

Girls- Plaid Skirt or Skort or K-3 option Plaid Jumper/ Red Polo / Solid Black or White Socks / Shoes same as Daily Uniform

Winter Chapel Tuesday's: November-February

Boys- Black pants / Oxford Shirt / CCA Cardigan / Plaid Tie / Solid Black Socks / Solid Black Shoes (No Design, Black Soles)

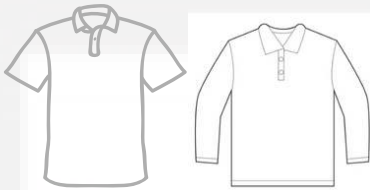
K - 3rd Girls- Plaid Jumper / Peter Pan Oxford Shirt / CCA Cardigan / Black Floppy Tie

4th - 5th Girls- Plaid Skort / Peter Pan Oxford Shirt / CCA Cardigan / Black Floppy Tie / Black Knee Socks / Solid Black Shoes (No Design, Black Soles)

Friday Spirit Day (optional)

Boys- Black bottom / Spirit top

Girls- Black or plaid bottom / Spirit top



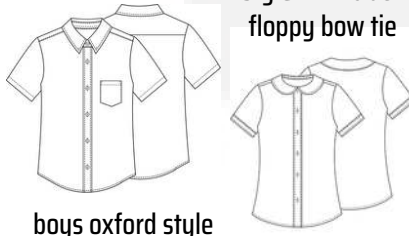
POLOS

LOGO REQUIRED

short and long sleeve

red | black | gray

Red required for Summer Chapel



boys oxford style
with plaid tie

girls peter pan
style with black
floppy bow tie

WHITE BUTTON UP

LOGO NOT REQUIRED

short sleeve

White required for Winter Chapel



POLO DRESS

LOGO REQUIRED

red | black

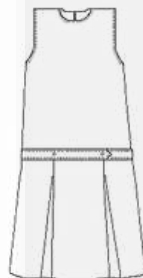
black shorts or leggings required
underneath



PANTS AND SHORTS

LOGO NOT REQUIRED

black



PLAID JUMPER*

K-3rd ONLY

LOGO NOT REQUIRED, worn with polo
black shorts or leggings required underneath



SKORTS

4th-5th ONLY

LOGO NOT REQUIRED

black | plaid*



CCA CARDIGAN

LOGO REQUIRED

black

required for Winter Chapel
(November - February)



PLAID TIE*

Required for Boys
Winter Chapel



BLACK FLOPPY TIE

Required for Girls
Winter Chapel

*All Plaid items should be purchased at The CornerSTORE or
www.schoolbelles.com CODE: s3035.

6th-8th Grade Guidelines

Daily Uniform

Boys- Black bottom / logo polo top, any color / Black or White Socks

Girls- Black or plaid bottom / logo polo top, any color

Shoes - Must be solid or a combination of school colors - Black, Gray, Silver, Red or White

Girls Socks - Ankle socks, knee-high socks, tights - Red, Gray, Black or White

Fall / Spring Chapel Tuesday's: Aug- Oct & March-May

Boys- Black Pants or Shorts / Red Polo/ Black or White Socks / Shoes same as Daily Uniform

Girls- Plaid Skirt or Skort / Black Polo / Black or White Socks / Shoes same as Daily Uniform

Winter Chapel Tuesday's: November-February

Boys- Black Pants / Oxford Shirt / Plaid Tie / Cardigan / Black Socks / Solid Black Shoes (No Design, Black Soles)

Girls- Plaid Skirt or Skort / Oxford Shirt / Short Plaid Tie / Cardigan / Black Knee Socks / Solid Black Shoes (No Design, Black Soles)

Friday Spirit Day (optional)

Boys- Black bottom / Spirit Top

Girls- Black or plaid bottom / Spirit Top



POLOS

LOGO REQUIRED

short and long sleeve

red | black | gray

gray required for Summer Chapel



OXFORD BUTTON UP

LOGO NOT REQUIRED

short sleeve
white

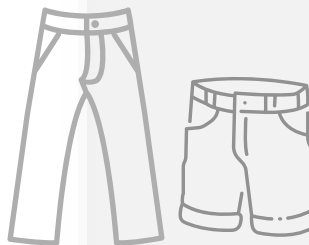
required for Winter Chapel,
worn with tie and cardigan only



PLAID TIE*

Short tie for girls, required for Winter Chapel

Boys required for Winter Chapel



PANTS AND SHORTS

LOGO NOT REQUIRED

black



SKORTS & SKIRTS

LOGO NOT REQUIRED

black | plaid*

Plaid required for Chapel



CCA CARDIGAN

LOGO REQUIRED

black

required for Winter Chapel
(November - February)

8th GRADE CARDIGANS - IMPORTANT!

MANDATORY- The 8th grade special Cornerstone "C" patch is required to be sewn on to the right side of the school Cardigan for Winter Chapel. PARENTS MUST purchase the "C" patch at The CornerSTORE. The CornerSTORE will sew the patch on to the 8th grade students cardigan. The cardigan MUST be brought to The CornerSTORE prior to 10/01/23 to have patch sewn on before Winter Chapel begins.

*All Plaid items should be purchased at The CornerSTORE or www.schoolbelles.com CODE: s3035.

Schoolwide Outerwear and Accessories



ZIP-UP JACKET

logo required
red | black | gray



SOCKS & TIGHTS

red | black | gray | white
solid colors only with no design

Academy Girls:

Winter Chapel: Solid Black knee socks/tights

Fall/Spring Chapel: Solid White or Black ankle or knee socks

Academy Boys:

Winter Chapel: Solid Black socks

Fall/Spring Chapel: Solid White or Black socks



SHOES & SHOELACES

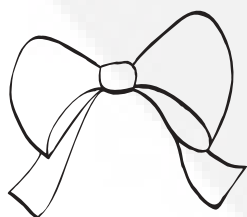
red | black | gray / silver | white

Light up shoes; shoes with wheels; shoes with holes, i.e. Crocs, Yeezy running shoes; foam shoes of any kind; open toe shoes; shoes with heels, characters, and accessories are NOT acceptable.

Academy Only: Tuesday Winter Chapel requires solid black shoes with black soles.

Optional Hair Accessories for Girls

red | black | gray | white | plaid*
or combination of school colors



Floppy Bow



Headband



Small Bow



Big Bow

*All Plaid items should be purchased at The CornerSTORE or www.schoolbelles.com CODE: s3035.

Cornerstone Spirit Gear

FRIDAY'S ONLY*

Preschool, Pre-K and K-8 students may wear Cornerstone Spirit Tops (CCA, CPAA, Cougar Athletics) with school uniform bottoms only.

*Beginners & Jr. Preschool students can wear Spirit Shirts on Mon., Wed., Thur., and Fri. with school uniform bottoms only.



SPIRIT T-SHIRTS: selection/styles vary
logo required / red | black | gray



SWEATSHIRTS AND HOODIES : selection/styles vary
logo required / red | black | gray